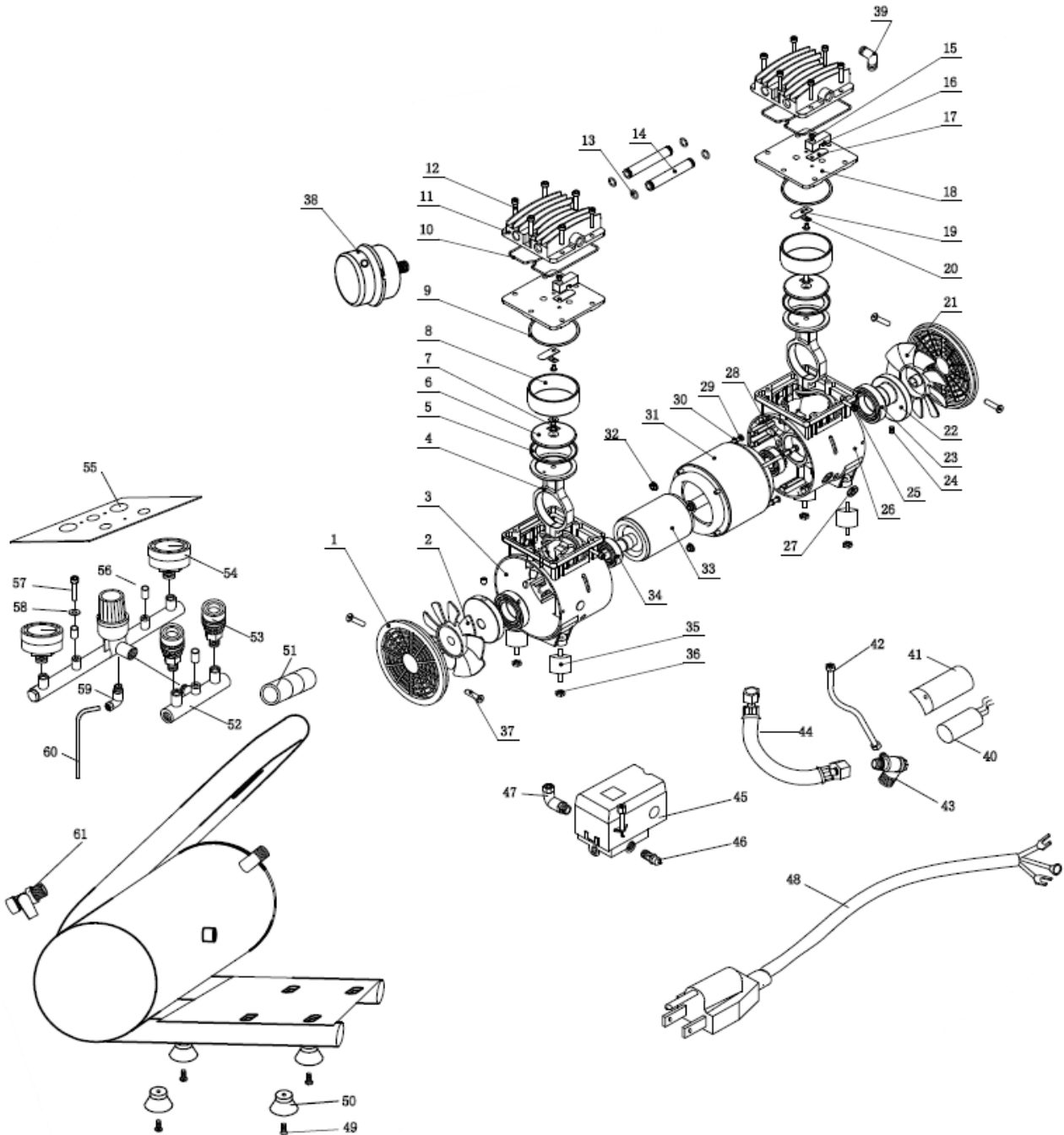


A General



COMPRESOR NIWA ASW-06



| Ref. | Cod. Rumbo | Descripción | Pcs. |
|------|------------|------------------------------------|------|
| 1 | 2863205 | Tapa de ventilador Niwa ASW6 | |
| 2 | 2863206 | Ventilador Izquierdo ASW6 | |
| 3 | 2863207 | Carter izquierdo ASW6 | |
| 4 | 2863208 | Biela ASW-6 | |
| 5 | 2863102 | Pistón ASW-6 | |
| 6 | 2863174 | Plato de piston ASW6 | |
| 7 | 2863070 | Arandela de flapper ASW-6 | |
| 8 | 2863211 | Cilindro ASW-6 | |
| 9 | 2863146 | O'ring de sellado ASW-6 | |
| 10 | 2863131 | Junta de tapa de cilindro ASW-6 | |
| 11 | 2863175 | Tapa de cilindro ASW6 | |
| 12 | | BOLT | |
| 13 | | OBTURATING RING | |
| 14 | 2863069 | Caño Conector de Cilindros ASW-6 | |
| 15 | | BOLT | |
| 16 | | LIMITED BLOCK | |
| 17 | 2863117 | Flapper superior ASW-6 | |
| 18 | 2863148 | Placa de flapper ASW-6 | |
| 19 | 2863111 | Flapper inferior ASW-6 | |
| 20 | | WASHER | |
| 21 | 2863176 | Ventilador derecho ASW6 | |
| 22 | 2863180 | Reten de eje ASW6 | |
| 23 | | BEARING 6006-2Z | |
| 24 | | BOLT | |
| 25 | | BOLT | |
| 26 | 2863177 | Carter derecho ASW6 | |
| 27 | | PROTECTION RING | |
| 28 | | BOLT | |
| 29 | | BOLT | |
| 30 | | SPRING | |
| 31 | 2863210 | Estator ASW-6 | |
| 32 | | NUT | |
| 33 | 2863209 | Rotor ASW-6 | |
| 34 | | BEARING 6203-2Z | |
| 35 | 2863178 | Amortiguador ASW6 | |
| 36 | | SPRING | |
| 37 | | SELF TAPPING | |
| 38 | 2863105 | Filtro de aire ASW-6 | |
| 39 | 2863094 | Codo conector de Cilindros ASW-6 | |
| 40 | 2863088 | Capacitor ASW-6 | |
| 41 | | CAPACITOR COVER | |
| 42 | 2863134 | Manguera de goma ASW-6 | |
| 43 | 2863162 | Valvula antiretorno ASW-6 | |
| 44 | 2863118 | Flexible mallado ASW-6 | |
| 45 | 2863154 | Presostato ASW-6 | |
| 46 | 2863169 | Valvula de presion ASW-6 | |
| 47 | 2863092 | Codo Conector Presostato ASW-6 | |
| 48 | | PLUG | |
| 49 | | BOLT | |
| 50 | 2863179 | Amortiguador de base ASW6 | |
| 51 | | HANDLE SLEEVE | |
| 52 | | SUPPORT | |
| 53 | 2863159 | Regulador de aire completo ASW-6 | |
| 54 | 2863135 | Manometro ASW-6 | |
| 55 | | PANEL | |
| 56 | | ADJUST HOLDER | |
| 57 | | BOLT | |
| 58 | | WASHER | |
| 59 | 2863091 | Codo Conector Salida de Aire ASW-6 | |
| 60 | 2863133 | Manguera de goma ASW-6 | |
| 61 | 2863119 | Grifo de drenaje ASW-6 | |
| | | | |
| | | | |

GRUPO RUMBO: Motoimplementos para Bosque, Jardín y Construcción

Teléfono rotativo: 54 11 5263-7862 - Email: ventas@rumbosrl.com.ar

Dirección: Av. Presidente Perón N° 4749, Benavidez (Norlog), Buenos Aires, Argentina.

